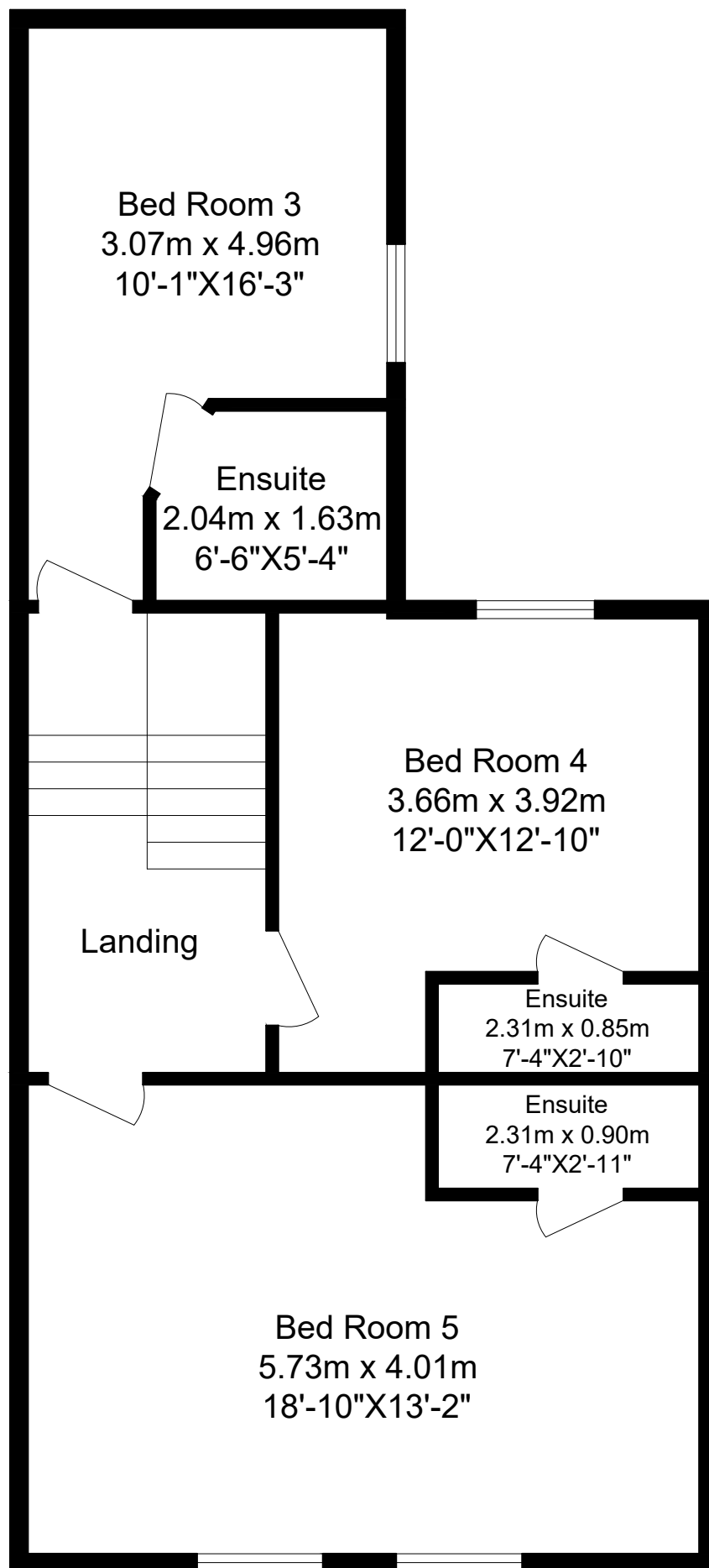


Ground Floor 74.47 sq.m. (689.18 sq. ft)

Scale 1:50 @A3

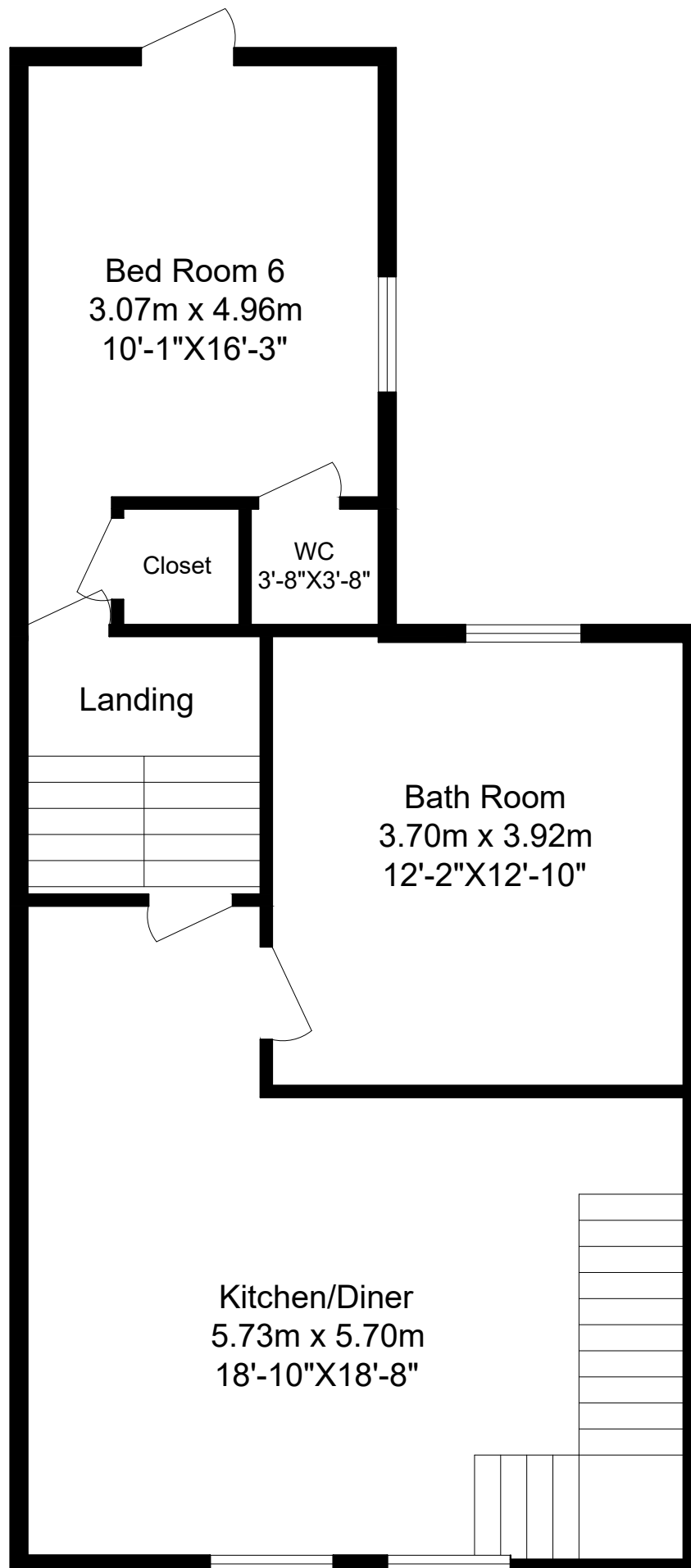
TOTAL FLOOR AREA

222.79 sq.m. (2285.67 sq. ft) approx.



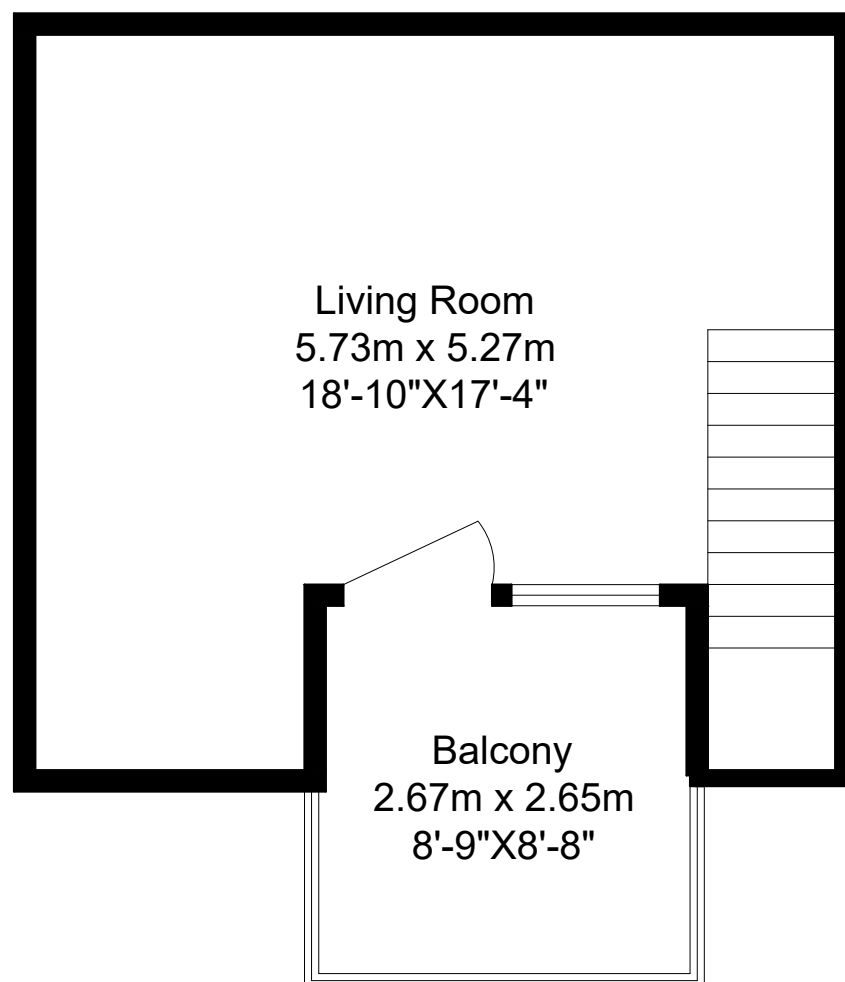
1st Floor 60.67 sq.m. (653.01 sq. ft)

Scale 1:50 @A3



2nd Floor 60.66 sq.m. (652.98 sq. ft)

Scale 1:50 @A3



3rd Floor 26.99 sq.m. (290.49 sq. ft)
Scale 1:50 @A3